

TREATED RADIATA PINE OR MERBAU
 Sizes: 70x19mm, 70x22mm, 90x19mm, 90x22mm, 140x19mm, 140x22mm.
 'Ultragrip' resistant additive to decking stain.
 Intergram 'UltraDeck' Stain

90x45mm TREATED PINE FLOOR JOISTS @ 450mm CENTRES

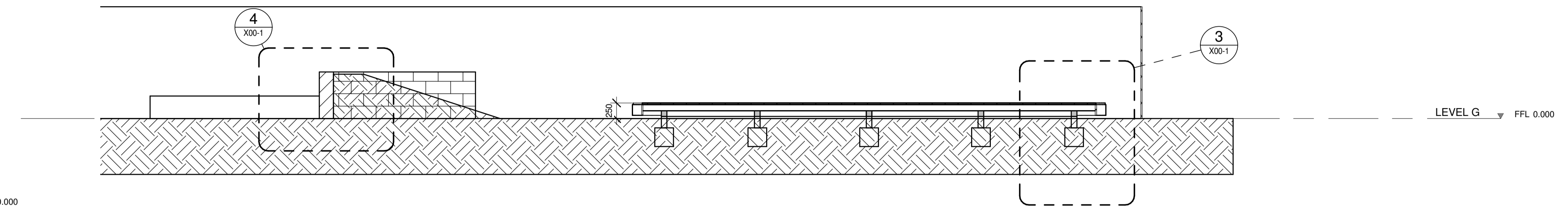
90x90 TREATED PINE BEARERS @ 1800mm SPACING

90x90 TREATED PINE POSTS

300x300x300 CONCRETE PAD FOOTINGS AND 90x90 TREATED PINE POSTS @ MAXIMUM 1500mm SPACING

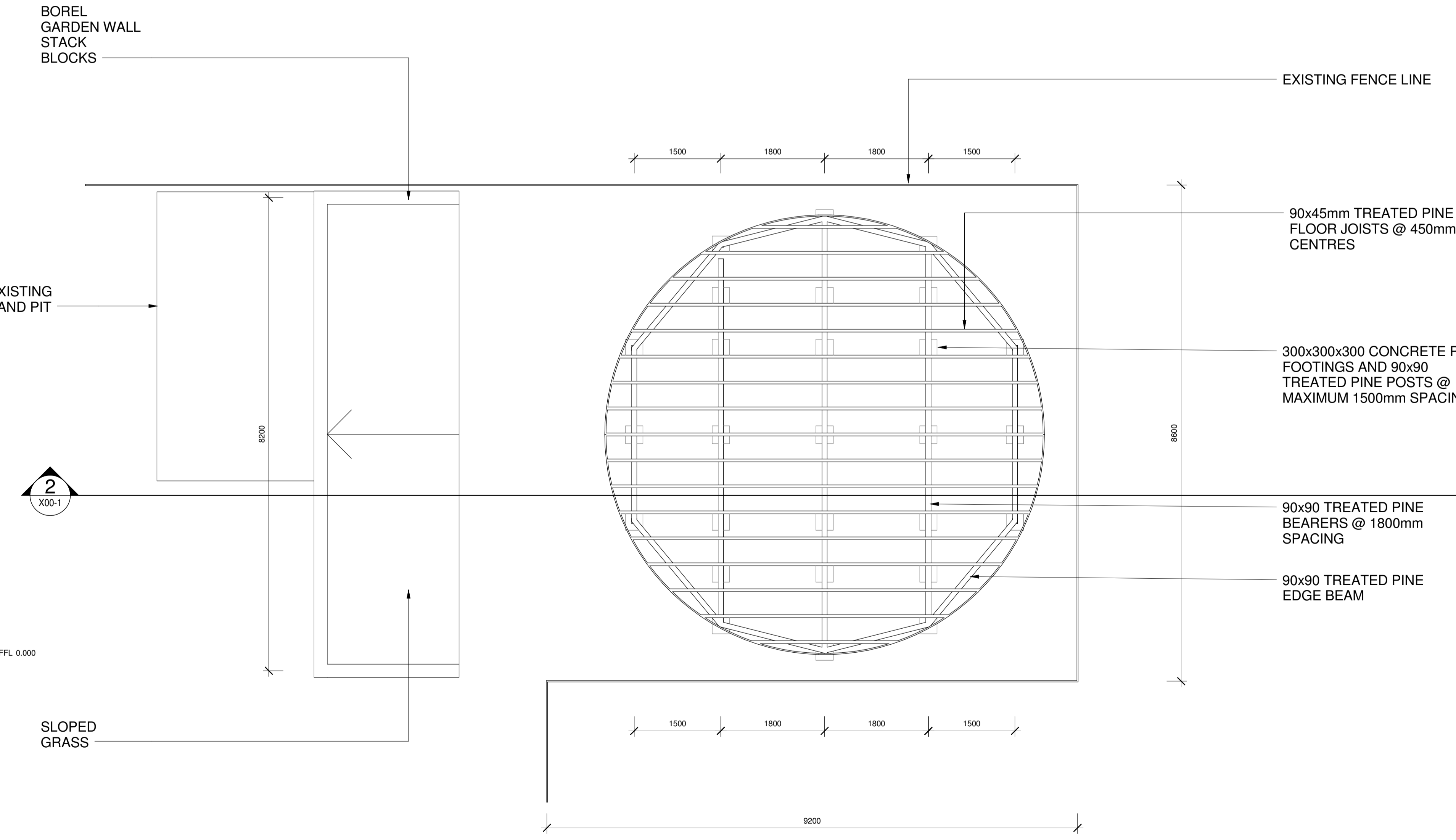
WEED MATT

LEVEL G FFL 0.000



2 Section 1
 X00-1 SCALE 1:50

3 Callout of Section 1
 X00-1 SCALE 1:10



2 X00-1

2 X00-1

1 GROUND FLOOR PLAN
 X00-1 SCALE 1:50

BORAL 'GARDEN WALL' RETAINING WALL OR SIMILAR

GRASS SLOPE

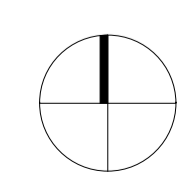
BACKFILL

DRAINAGE MATERIAL

AGRICULTURAL DRAIN

LEVEL G FFL 0.000

4 Callout (2) of Section 1
 X00-1 SCALE 1:10



Date:

Project:

ASCOT VALE PRIMARY SCHOOL DECK

Drawing Title:

PLAN, SECTION AND DETAILS

Drawing Number:

X00-1

Revision:

Scale:

As indicated @ A1